

Hart Pastures, Hart, Hartlepool, TS27 3AQ

Guide Price £450,000

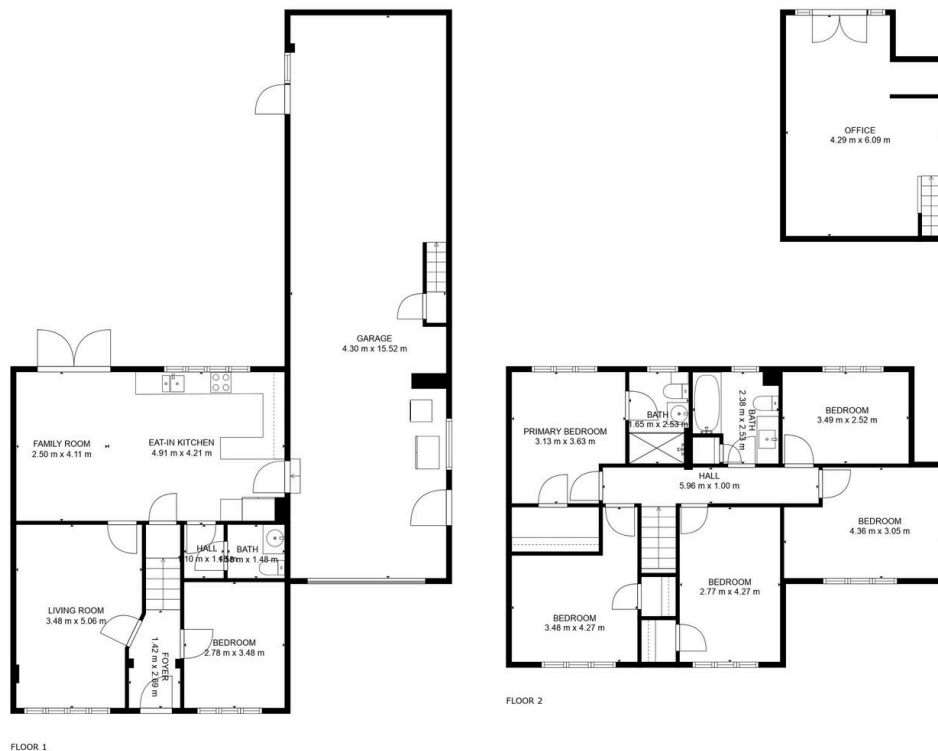
🛏️ 5 🚿 2 🚗 3



The Yorkshire Property Agency is delighted to introduce this fabulous five / six bedroom detached family home located in a popular village of Hart, TS27. This property benefits from a modern finish throughout, offers flexible accommodation and would make an attractive option for anyone looking to work at home.

Key Features

- Substantial detached family home
- Flexible accommodation
- Double-length garage
- Potential to extend further (STPP)
- Rural aspect to the rear
- Five / six bedrooms
- Office space
- Off-street parking for multiple cars
- Close to Hartlepool amenities
- South facing garden



TOTAL: 174 m²
FLOOR 1: 69 m², FLOOR 2: 105 m²
EXCLUDED AREAS: GARAGE: 67 m², LOW CEILING: 2 m²
FLOOR PLAN CREATED BY CUBICASA APP. MEASUREMENTS DEEMED HIGHLY RELIABLE BUT NOT GUARANTEED.