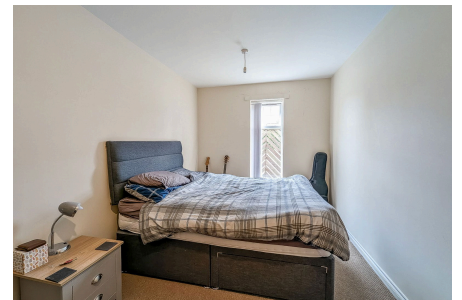


15, Trueman Court Green Lane

£65,000

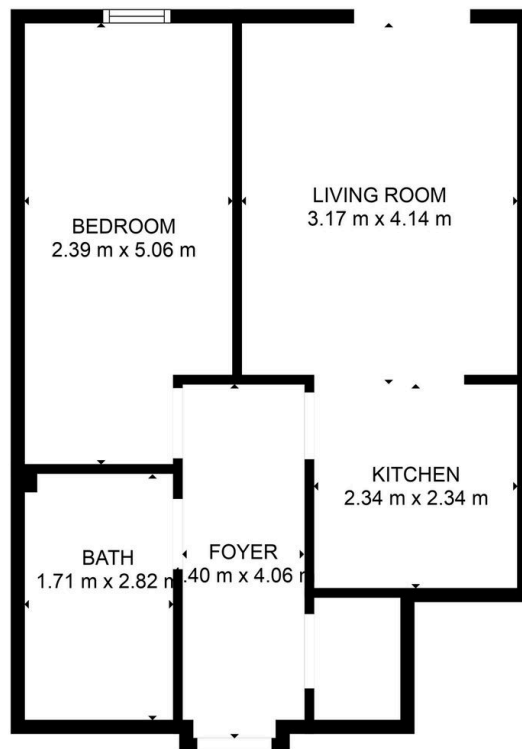
1 1 0



The Yorkshire Property Agency are delighted to introduce this great one-bedroom flat in a popular location in TS5, Middlesbrough. This ground floor flat would make an excellent first-time purchase, investment or Middlesbrough bolthole.

Key Features

- One bedroom flat
- Allocated parking
- Chain-free sale
- Double glazing
- Close to the Linthorpe amenities
- Ground floor
- Secure communal doors
- Council tax band A
- Easy turnkey investment or first-time purchase
- Good long lease of over 100 years remaining



TOTAL: 44 m²
FLOOR 1: 44 m²

FLOOR PLAN CREATED BY CUBICASA APP. MEASUREMENTS DEEMED HIGHLY RELIABLE BUT NOT GUARANTEED.