

Dromonby Grange Farm, Busby Lane, Kirkby-in-Cleveland

£1,000,000

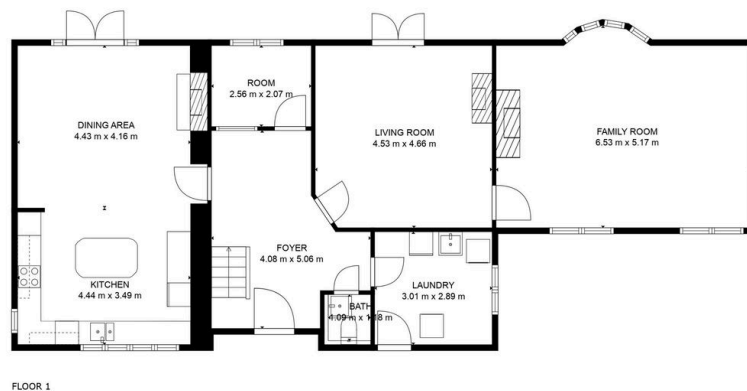
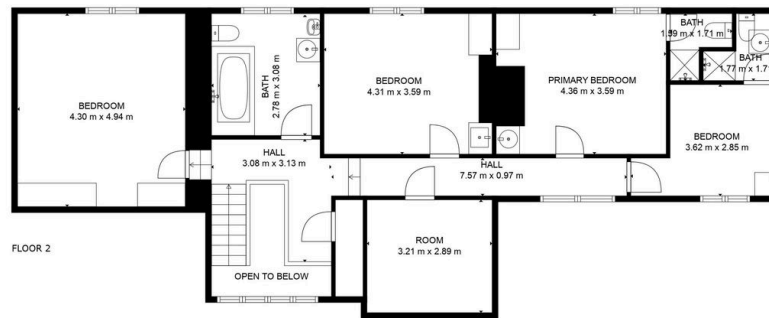
🛏 5 🍷 3 🚗 3



The Yorkshire Property Agency are absolutely delighted to introduce this fabulous small-holding located just outside the popular North Yorkshire village of Kirkby-in-Cleveland. The property benefits from huge potential to extend and develop (STPP) and boasts surrounding grass and woodland of approximately 10.45 acres in addition to a series of agricultural outbuildings; one of which has planning permission granted for conversion to a four-bedroom residential dwelling (details below).

Key Features

- Unmodernised Smallholding
- Beautiful five-bedroom farmhouse with potential to extend (STPP)
- Series of outbuildings
- Chain-free sale
- South-facing plot
- Unobstructed views of the North Yorkshire Moors
- A short drive to the amenities of Stokesley and Yarm
- Attractive surrounding gardens



TOTAL: 199 m²
 FLOOR 1: 124 m², FLOOR 2: 75 m²
 EXCLUDED AREAS: PRIMARY BEDROOM: 16 m², LOW CEILING: 10 m², ROOM: 7 m²,
 OPEN TO BELOW: 4 m²

FLOOR PLAN CREATED BY CUBICASA APP. MEASUREMENTS DEEMED HIGHLY RELIABLE BUT NOT GUARANTEED.